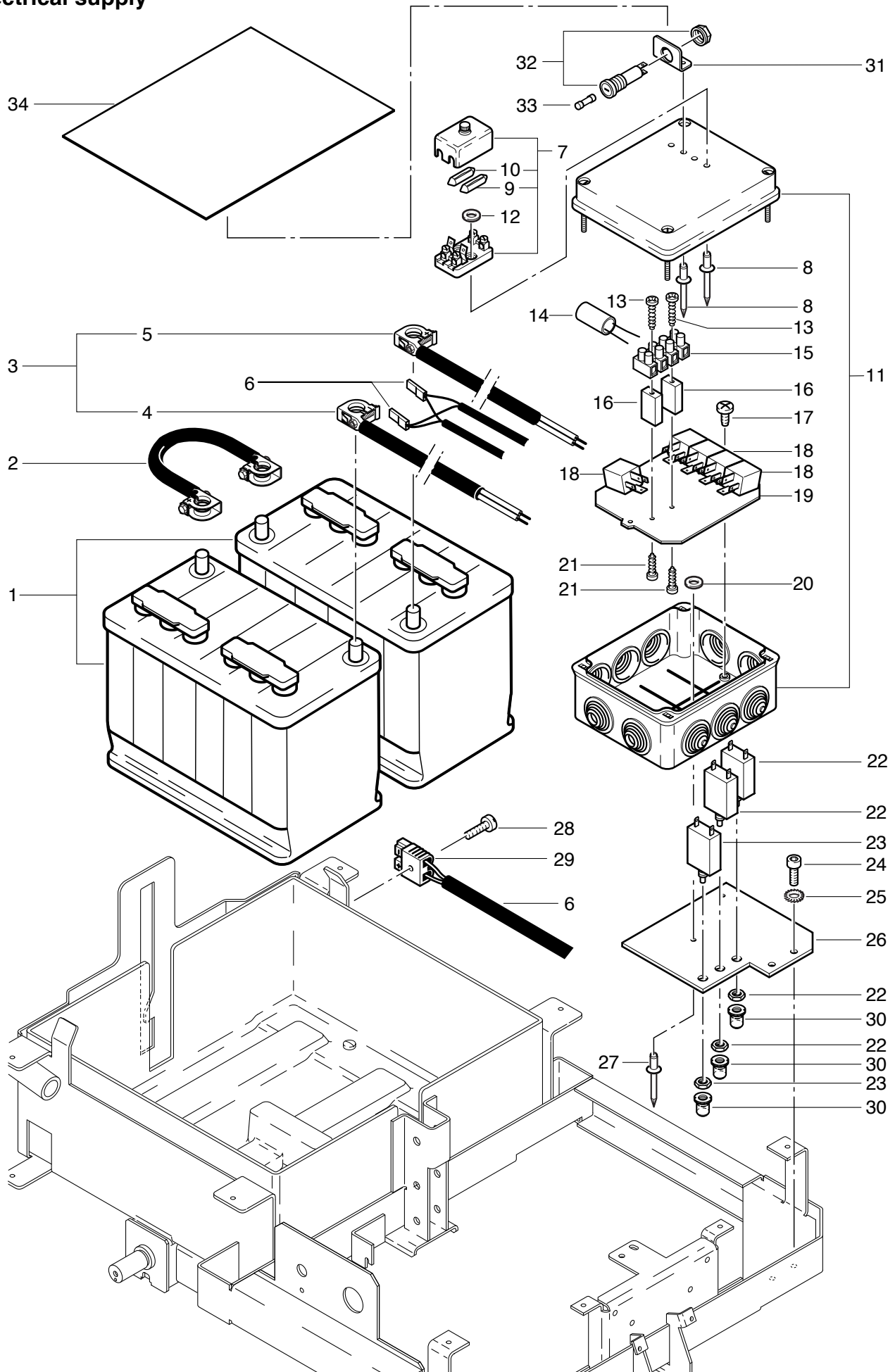


RA 530 B
Electrical supply



RA 530 B

Electrical supply

Pos.	Description	Reference
01	Set of wet batteries 2x12 V / 105 Ah (5 hours)	530.090
01	Set of Gel batteries 2x12 V / 100 Ah (5 hours)	530.091
02	Battery connecting cable	530.315
03	Battery cable	530.311
06	Charger cable	530.314
07	Fuse box	500.956
08	Blind rivet	P...485D
09	Fuse 5 Amperes	P...407S
10	Fuse 25 Amperes	P...407T
11	Distribution box	530.320
12	Washer M4	P...496D
13	PT screw KA 30x25 mm	P...515C
14	Capacitor 0.47 uF	P...393B
15	Electrical terminal (4)	P...383K
16	Distance piece 20x10x35 mm	P...382
17	Self tapping screw M 4x8 mm	P...481Q
18	Relais 24 Volts	500.982
19	Electrical plate	530.329
20	Washer M4	P...496C
21	Pan head tapped screw 3.5x12 mm	P...482I
22	Motor protection switch 10A	500.957
23	Motor protection switch 15A	530.318
24	Hexagon socket screw M 6x12 mm	P...486Q
25	Serrated lock washer M6	P...498K
26	Attachement plate	530.321
27	Blind rivet	P...485C
28	Self tapping screw 4.2x19 mm	P...484M
29	Grey plug housing	P...358B
30	ETA protection cap	500.957A
31	Aluminium angle	530.331
32	Fuse holder	P...364
33	Fuse T1A 5 x 20mm	P...218A
34	Splash protection	530.332