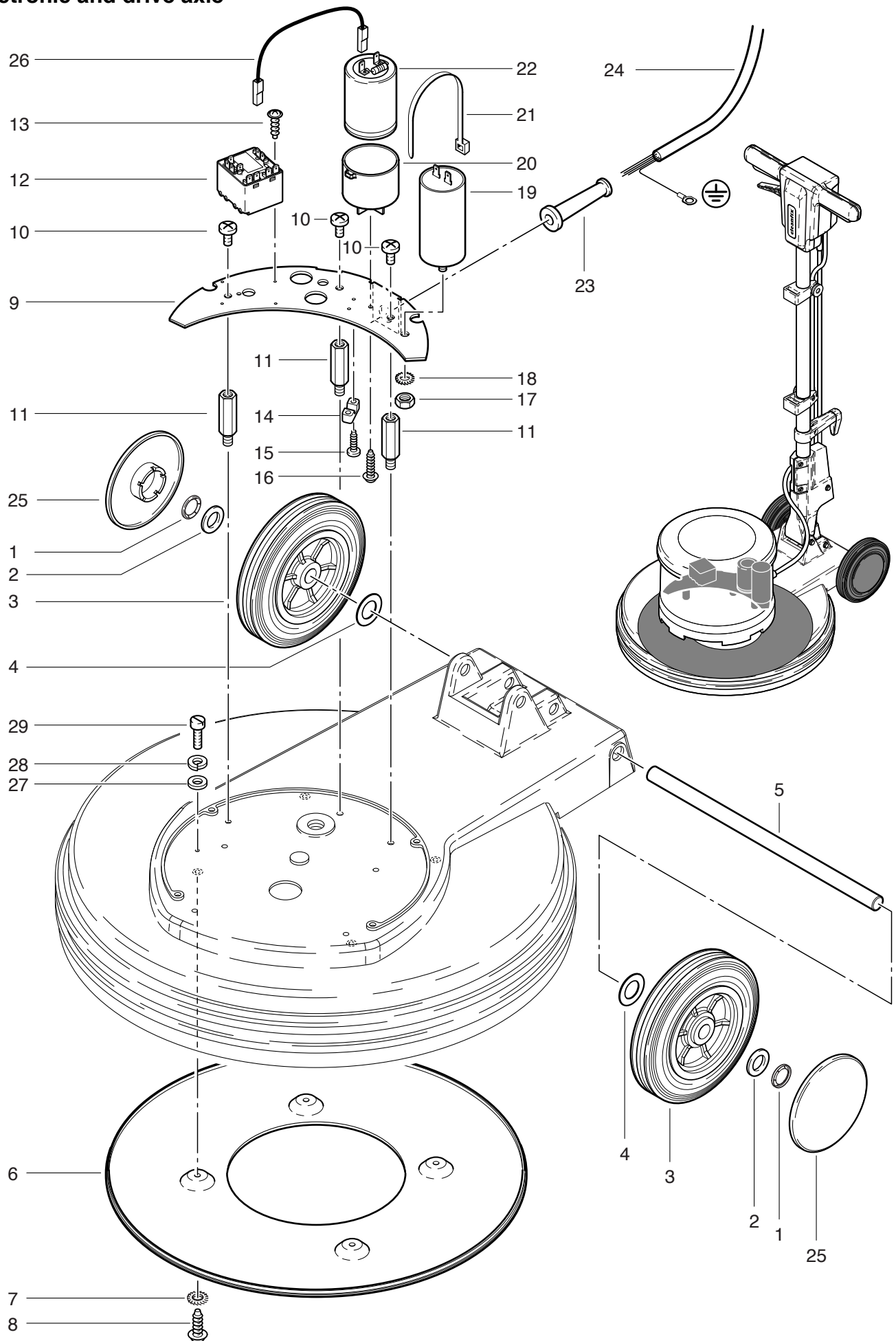


R 50-150
Electronic and drive axle



Elektronik und Fahrwerk

R 50-150

Electronic and drive axle

Pos.	Description	Reference
01	Retaining ring	P...500 M
02	Washer M 14	P...496 Y
03	Wheel 160 mm	741.075
04	Washer 16x28x0.5mm	P...510
05	Wheel axle	736.040
06	Bottom plate	742.146
07	Serated lock washer M 5	P...498 D
08	Sheet metal screw 4,8x13	P...483 B
09	Reinforcement piece	P...405 F
10	Screw M 6x8	P...475 P
11	Distance ring	M 6x40x13x8x7 PS P...484 U
12	Relais with	P...350
13	Srew M 3x8	P...476 O
14	Cable clamp	742.321
15	Screw M 5x16	P...476 G
16	Screw M 4x20	P...515 G
17	Lock washer M 8	P...491 F
18	Self-tapping screw M 5x20	6610419
19	Capacitor 25 µF	P...385 J
20	Holder for capacitor	741.316
21	Cable tie 292 mm	P...424
22	Capacitor 125µF 47 kOhm	742.328
23	Antikink sleeve	660011014
24	Cable-tree	741.312
25	Wheel cover red	741.076
26	Wiring black	742.331
27	Washer M 4	P...497 D
28	Serated lock washer M 4	P...498 C
29	Screw M 4x8	P...478 B